



Kyliez  
suites

@ KL City Centre



K  
U  
A  
L  
A



L  
U  
M  
P  
U  
R

Characterized by a mix of sparkling skyscrapers, low-density condos, and luxury hotels, its location along Jalan Mayang across from the Kuala Lumpur City Centre and the iconic Petronas Twin Towers situates Kyliez Suites @ KL City Centre in a bustling, cosmopolitan, and vibrant neighbourhood. This area has established itself as a hub for shopping, nightlife, and excellent dining with many of the city's top fashion malls, five-star hotels, high-end restaurants, and rooftop bars just steps away. In addition to being a great place to live, property owners can also make Kyliez Suites @ KL City Centre their stylish business address. Apart from being a corporate hub, the district is easily walkable; meetings and power lunches are just a stroll away!

绚丽夺目的摩天大楼、低密度公寓以及豪华酒店，三大特色，精华荟萃。Kyliez Suites @ KL City Centre 坐落在马洋路 (Jalan Mayang) 上，竖立于吉隆坡闹市中，步行距离内即可轻松抵达标志性地标双峰塔，区域优势无可比拟。

这里是购物、夜生活、美食、流行文化汇集的场所，是高级百货公司、五星级酒店、顶级餐厅、顶楼酒吧汇聚的指标区，一切近在咫尺。

除了可以成为理想住所，基于 Kyliez Suites @ KL City Centre 占据核心地理位置，商圈配套完善，可用作商务办公的用途。仅几步之遥即可抵达商务会议活动、享用商务午餐，非常方便。

闪耀核心地带  
CENTRE  
OF IT ALL



繁华核心地段  
DYNAMIC  
LIVING  
IN A

都市生活首选  
VIBRANT  
LOCATION

KYLIEZ SUITES KYLIEZ SUITES KYLIEZ SUITES KYLIEZ SUITES KYLIEZ SUITES





# 大胆创新 BOLDNESS



从这里开始  
STARTS  
HERE

Come home to light-filled spaces and contemporary finishes that allow your striking personal style to take centre stage. At Kylicz Suites @ KL City Centre, you come for the location and stay for an impressive home, luxury amenities and iconic neighbourhood. The spacious, open designs of our 1- and 2-bedroom units and office suites are perfect for entertaining, relaxing and collaborating; perfect for your ever-changing lifestyle. Glamorous today and minimalist tomorrow, you'll have a home that keeps up with you.

采光格局与光线明亮，全屋现代化装潢和摆设，引人注目的独特风格，彰显高贵！入住 Kylicz Suites @ KL City Centre，坐拥繁华核心地段，享受奢华尊荣的居所，及其带来的豪华公共设施、最具标志性的商圈所带来的生活便利。一房或两房居住单位以及家居办公室，皆是宽敞舒适的开放式空间，完美适合社交娱乐、放松休憩、办公接待等多元风貌的都市生活形态。都市生活璀璨夺目，居家生活低调惬意，您理想的家就是紧贴步伐，与您同步。



# 顛覆想象的 City Living,



Kyliez Suites  
Kyliez Suites  
Kyliez Suites  
Kyliez Suites

Artist's Impression

都市生活  
Reimagined



# Kylie's



Pool

# K' Aqua Bar



Kylie's Suites  
Kylie's Suites  
Kylie's Suites  
Kylie's Suites







Artist's impression

## Creativity Hub



Artist's impression

## Kylie's Lobby



Artist's Impression



# The Posh House



FlexFit



# 设计草图

# FLOOR PLANS

Kyliez Suites @ KL City Centre has a range of spaces and features to accommodate a broad range of office users. Our curated tenant amenities are designed to encourage socializing, connecting with colleagues, and collaborative working.

Kyliez Suites @ KL City Centre 拥有多种空间和功能，适合广泛的办公用户需求。租户的便利设施经过精心策划，可促进社交互动，与同事进行交流与合作。



DE KING BOUTIQUE  
HOTEL /  
OXLEY TOWERS



AVENUE K /  
KLCC

MAYANG  
COURT

- TYPE A
- TYPE B
- TYPE C



# LAYOUT PLANS

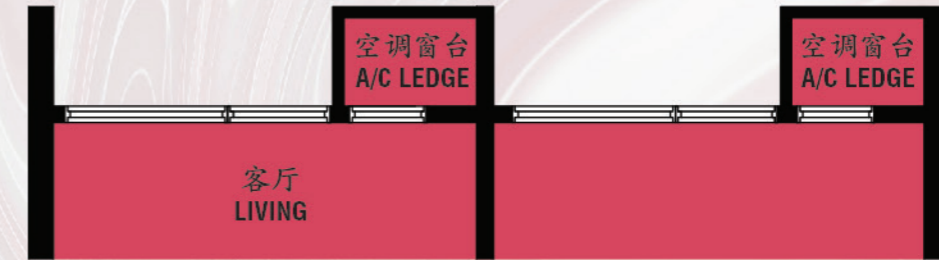
## 房型 | TYPE A1

2R1B | 484sq.ft. (平方英尺) | 45sm (平方米)



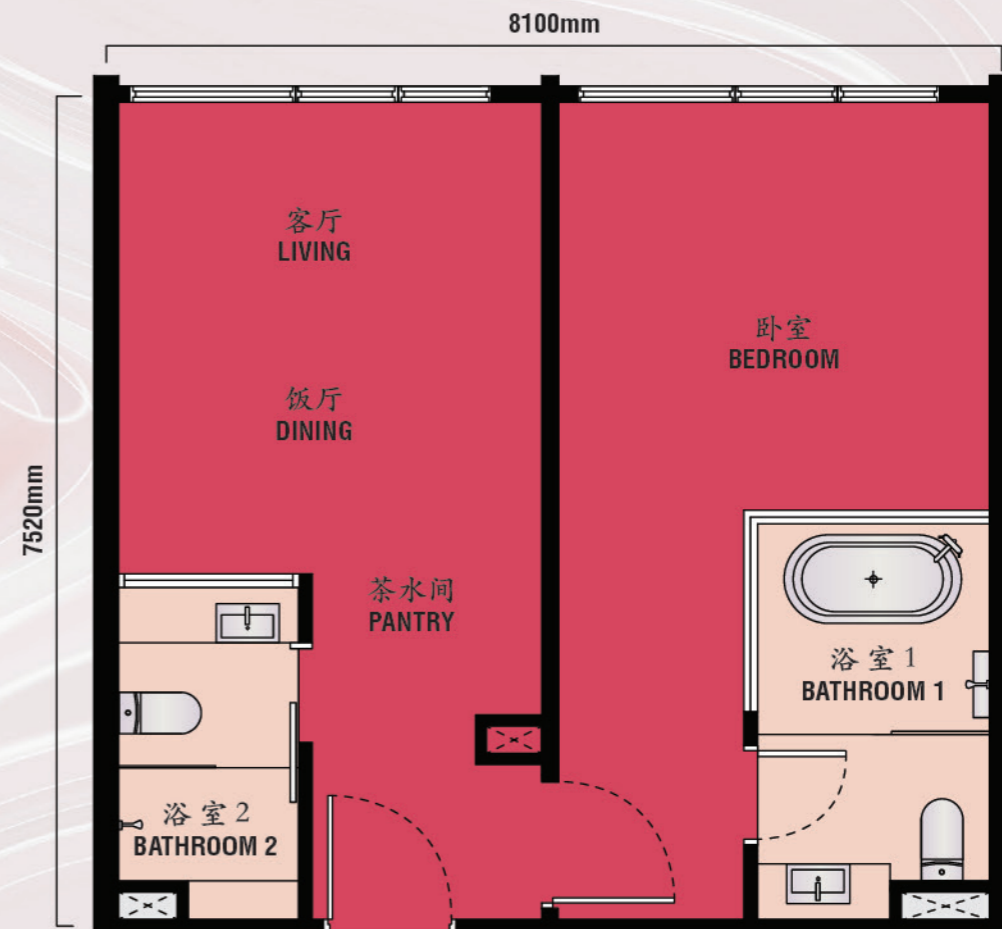
## 房型 | TYPE B1

1R2B | 657sq.ft. (平方英尺) | 61sm (平方米)



## 房型 | TYPE B4

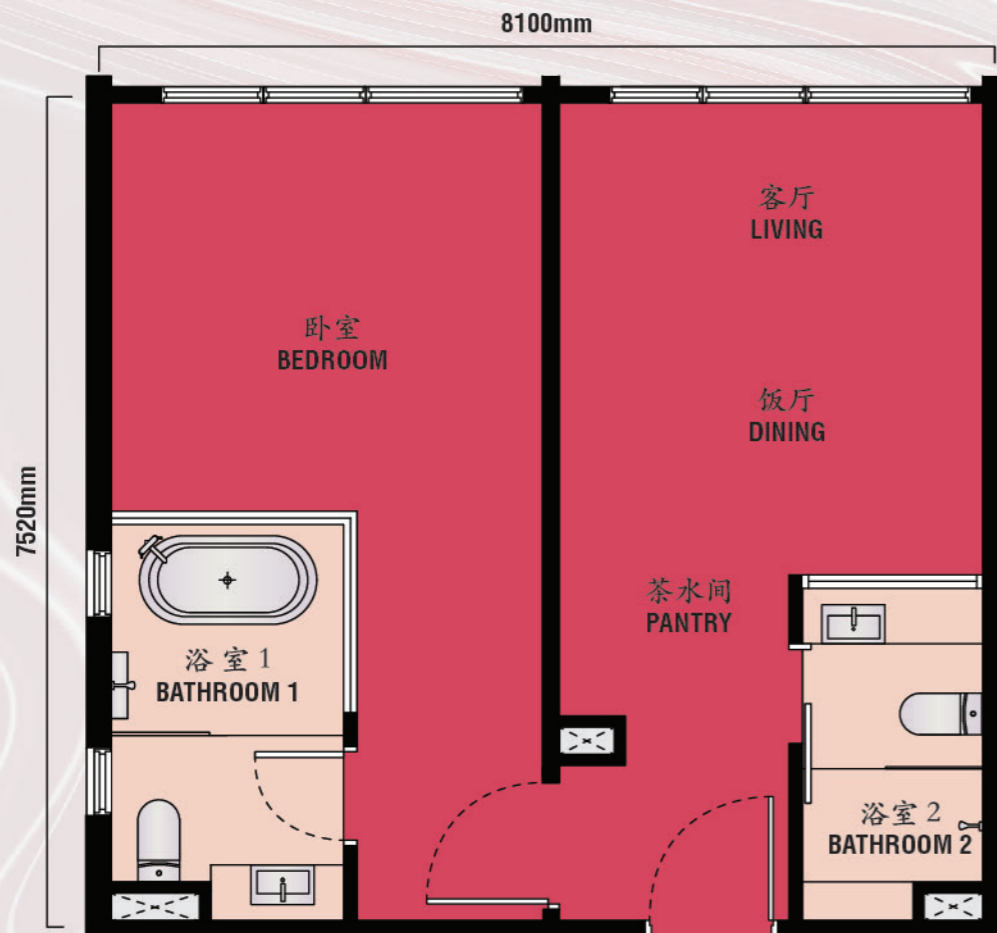
1R2B | 657sq.ft. (平方英尺) | 61sm (平方米)





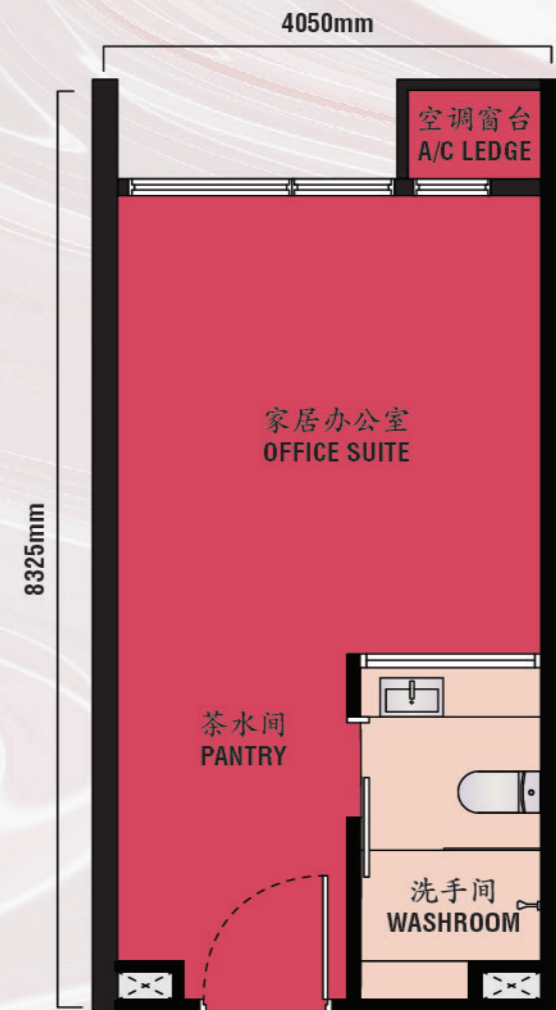
房型 | TYPE B2 / B3

1R2B | 657sq.ft. (平方英尺) | 61sm (平方米)



房型 | TYPE C1 / C2

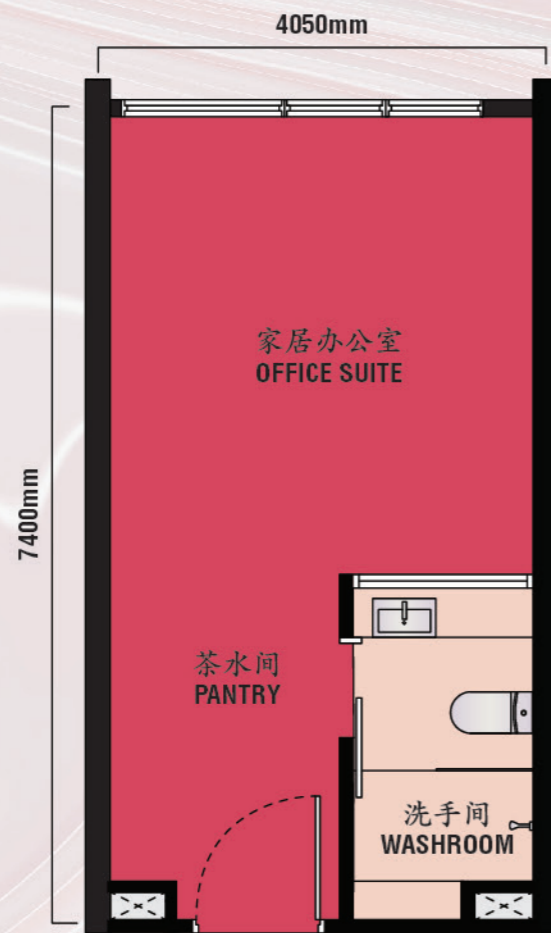
Studio Office | 323sq.ft. (平方英尺) | 30sm (平方米)





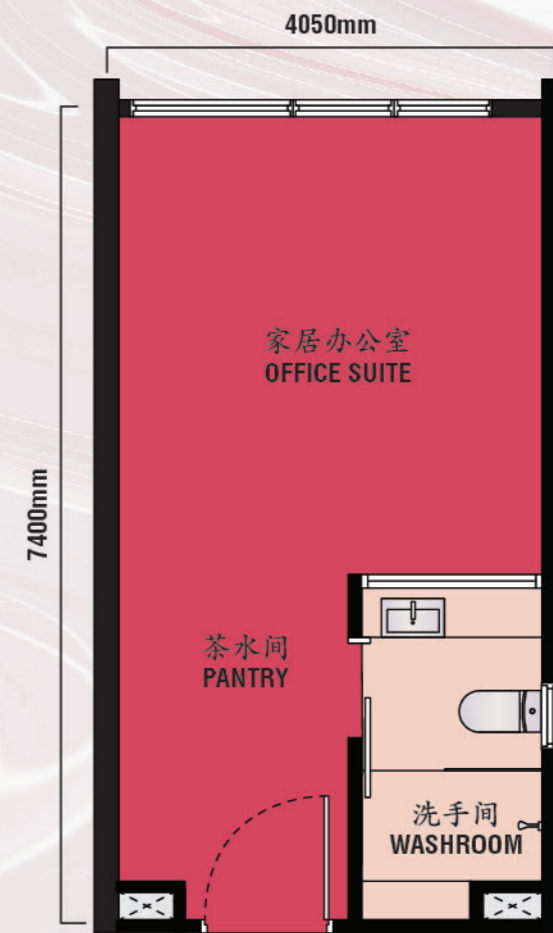
房型 | TYPE C3 / C4

Studio Office | 323sq.ft. (平方英尺) | 30sm (平方米)



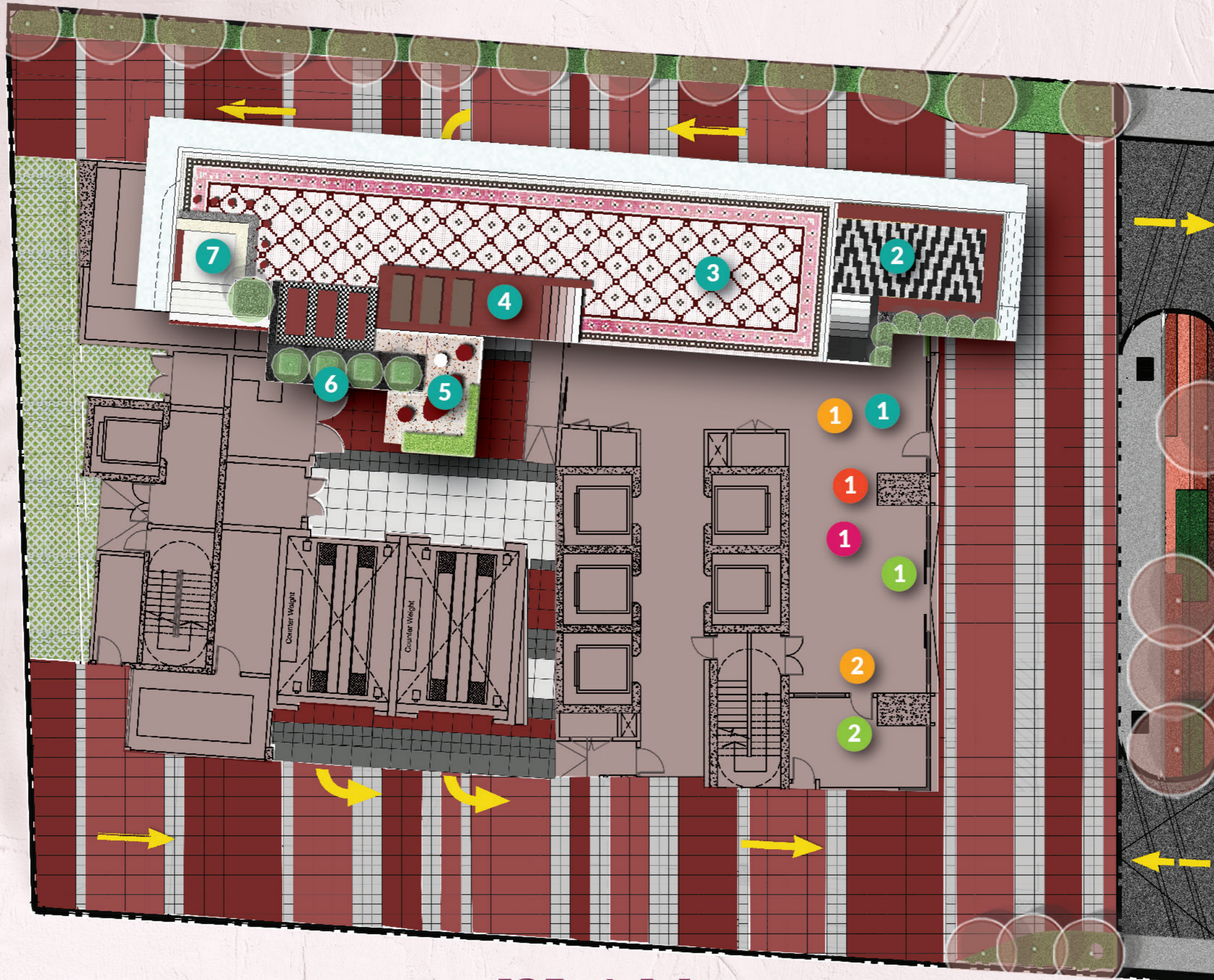
房型 | TYPE C5 / C6

Studio Office | 323sq.ft. (平方英尺) | 30sm (平方米)





# FACILITIES



## LEVEL G

1. Concierge (迎宾处)
2. Kylie's Lobby (Kylie 大堂)

## LEVEL 1

1. Velvet Lounge (天鹅绒大厅)

## LEVEL 3A

1. Creativity Hub (创意中心)

## LEVEL 35

1. The Funhouse (游乐屋)
2. The Posh House (Meeting Room) (奢华屋)

## LEVEL 36

1. FlexFit (健身房)
2. Bubbly Jacuzzi (泡泡按摩池)
3. Kylie's Pool (Kylie 泳池)
4. Sunlounger (阳光休闲区)
5. Horizon Lounge (地平线休闲区)
6. Pool Deck (泳池平台)
7. K' Aqua Bar (K' 酒吧)

# PLAN





# 位置图

# LOCATION MAP



With an address on Jalan Mayang opposite Avenue K, you're steps from Jalan Ampang and the world-class shopping, dining, and bar scene for which Kuala Lumpur's Golden Triangle is known.

这里就坐落在马洋路 (Jalan Mayang), 与 Avenue K 商场遥遥相望, 步行即可抵达安邦路 (Jalan Ampang)。世界级时尚、购物、饮食、奢华样样俱全, 汇聚在吉隆坡金三角, 生活娱乐, 触手可及, 给予您全方位的享乐体验。





 **EXSIM KL Sales Gallery**

G-01 Menara Sutera Damai,  
No 10, Lorong Yap Kwan Seng,  
Bukit Kewangan, 50450, Kuala Lumpur.

**T:** 03 - 8684 2233      **M:** 010 - 271 9912  
**W:** [kyliez.com.my](http://kyliez.com.my)

**EXSIM Avenue Sdn Bhd** [1464422-X]

D-35-01, Level 35, EXSIM Tower,  
Millerz Square @ Old Klang Road, Megan Legasi,  
No. 357, Jalan Kelang Lama, 58000 Kuala Lumpur.

**T:** 03 7963 1999      **E:** [info@exsim.com.my](mailto:info@exsim.com.my)  
**W:** [exsim.com.my](http://exsim.com.my)

All information, items and/or products herein contained and/or displayed, including but not limited to measurement, features, materials, specifications, brands, colours, plans, drawings, images, pictures, visual renditions, illustrations and presentation of interiors, furniture and fittings layout, landscapes, roads, access, lifestyle, scale models, show units and/or development are artist's impressions/renderings for illustration purposes only and are subject to change as may be required and/or recommended by the relevant authorities and/or the developer's architects, engineers and/or consultants without prior notification to you. Nothing contained herein shall be taken as identical representation of the actual state thereof or constitute or be construed to constitute an offer, a contract, part of the sale and purchase agreement (SPA), a representation and/or warranty on the part of the developer, unless expressly and specifically incorporated in the SPA. Prospective purchasers are advised to read and scrutinize the SPA together with its enclosures or to engage relevant independent professionals for advice prior to signing of the SPA. The developer and/or other related companies and parties shall neither be held responsible for any claims, error or inaccuracy nor be liable for any losses, damages, costs, expenses, or liabilities that may be incurred, suffered or sustained resulting from any reliance on any information, items and/or products herein contained and/or displayed or any part thereof.

• **Pemaju:** EXSIM AVENUE SDN BHD [202201018725 (1464422-X)] • **No Lesen Pemaju:** 30789/06-2029/0131(A) • **Tempoh Sah:** 06/06/2024 sehingga 05/06/2029 • **No. Permit Iklan & Jualan:** 30789-1/08-2027/0704(N)-(S) • **Tempoh Sah:** 07/08/2024 - 06/08/2027 • **Pihak berkuasa yang meluluskan:** DEWAN BANDARAYA KUALA LUMPUR • **No Pelan Rujukan:** BP T3 OSC 2023 3162 (28) • **Pegangan Tanah:** KEKAL • **Sekatan Kepentingan:** TIADA • **Beban Tanah:** AFFIN ISLAMIC BANK BERHAD • **Tarikh Jangka Siap:** AUG 2028 • **Bilangan Unit:** 126 Unit • **Harga Jualan:** RM 1,272,705.00 (MIN) - RM 1,676,470.00 (MAK) • **2% Bumiputera Diskaun** • **Jenis Pembangunan:** PANGSAPURI SERVIS